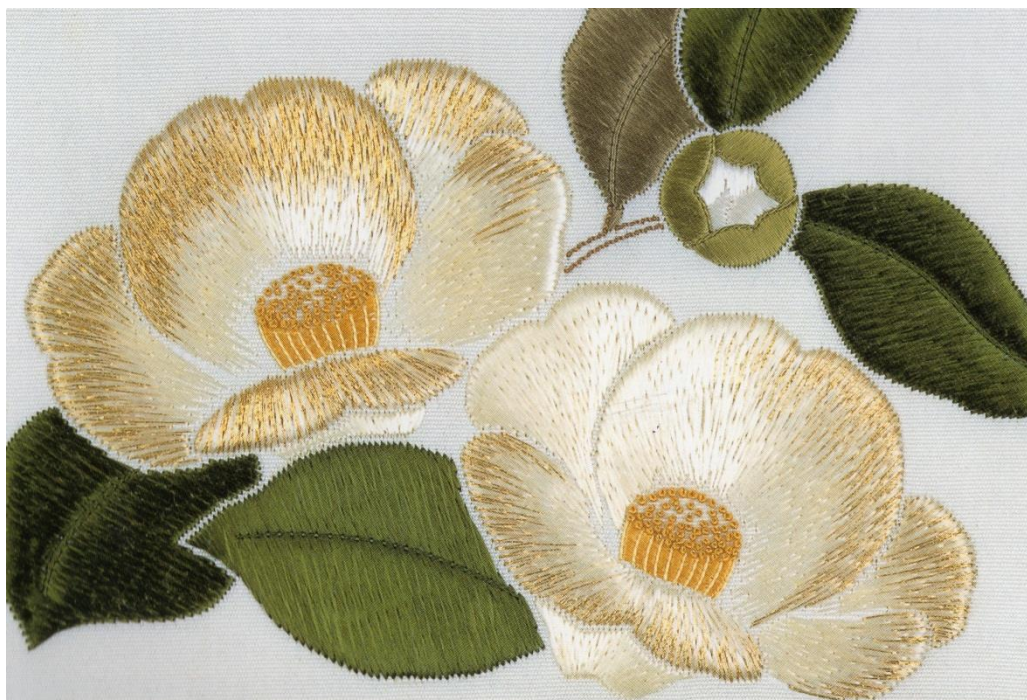


Traditional Japanese Embroider Workshop
Treacy Conference Centre, Melbourne
September 28th - 1st October 2013



TXJ01-101 Golden Camellias

Dear Japanese Embroidery Members and Teachers,

We are honoured to have professional Japanese Tutor Kazumi Fujisawa (nee Tamura), from the Japanese Embroidery Centre, visiting Australia for a four day workshop in Melbourne.

Program: Realistic Technique

Designs offered include:

WKB08-57T *Flower Ship* – (page 57 in World of Kurenai-Kai): for phase 6 and above
Fabric choice (18” fabric required)

- Monmuji dyed TC#718 (12.50/inch retail)
- Kimono dyed TC#716 (\$8/inch retail) with Sayagata pattern - quantity limited

WKB08-060BL *Iris* – (page 60 in World of Kurenai-Kai): for phase 7 and above

- Sazanami (\$8/inch retail) – quantity limited
- Nagoya obi white with gold flow (\$5.50/inch retail)
- Kimono with gold (\$6/inch/retail)

TXJ01-101 *Golden Camellias* (page 101 in Japanese textbook (ondori)): phase 3 and above

- Shioze white (\$7.50/inch retail)
- Nishijin white (\$4/inch retail)

Option for beginners

Beginners have the option of bringing their own piece, if they don't wish to work on one of the pieces listed above. There would **not** be any formal instruction given if you're stitching your own piece, but support would be given during the workshop. You may also take notes on the realistic technique, as this may be useful in the future.

Location

Treacy Conference Centre - 126 The Avenue (near the corner of Royal Parade and Walker Street), Parkville. Treacy is located just 3km from the Melbourne CBD, and 20km from Melbourne's International Airport at Tullamarine. The Centre is also close to the Melbourne Zoo, State Netball Centre, Hockey Centre and Melbourne University. The spectacular surroundings and buildings create a relaxed and welcoming atmosphere, which is perfect for corporate functions and receptions. For more information please visit their website

www.treacycentre.com.au



Treacy Conference Centre

Accommodation

Teacher accommodation is situated at Treacy Conference Centre.

We recommend all students book their accommodation as early as possible, as it will be a very busy weekend in Melbourne with the AFL Grand Final.

Nearby accommodation includes:

Vibe Hotel Carlton is within walking distance of Treacy, and we have five king rooms on hold (at \$147.50 per room). The hotel has breakfast available, and we plan to have dinner there each night. When booking please say you are with the Japanese Embroidery group committee. Email contact carlton@vibehotels.com.au For more information please visit www.vibehotels.com.au

Best Western Melbourne's Princes Park Motor Inn is a 5 minute walk from Treacy Conference Centre. <http://www.princespark.bestwestern.com.au>

There are also several Universities and Colleges in Parkville, which offer accommodation and are located within walking distance of Treacy Conference Centre. These include: StMary's College, Queen's College, Trinity College and University College. These options can be found at www.melbourneuniversityrooms.com



WKB08-060BL Iris



WKB057T FlowerShip

Meals

Lunch can be purchased at Treacy, including a sandwich and fruit platter. Afternoon tea with coffee/tea and homemade biscuits and slices will also be available.

Classroom

Access to the stitching classroom at Treacy will be from 8:30am–5pm, and 7pm–9pm.

Classes will run from 10:00am–3:30pm. With a one hour break for lunch and afternoon tea at 4pm.

On Friday 27th the classroom will be open for framing up between 2-5pm. Alternatively, framing up may be done before the first class at 8:30am on Saturday 28th.

Workshop requirements

- °All costs and booking forms will be sent on request.
- ° It is advisable to purchase all pieces through your teacher in advance, and be framed up ready to stitch on the morning of the first class.
- °An invoice with Kit Design Fabric will be sent to you with all embroidery orders. Kit Threads won't be sent with the Kits, they will be given on arrival at the workshop.
- °Please make a copy of all forms for your own records.
- ° To confirm your place in the workshop you must pay a non- refundable deposit (50% of the total fee) by May. Total balance must be received no later than July 31st, 2013.
All prices are inclusive of GST, and all costs have been calculated on a not-for- profit basis.
- °You must be responsible for booking your own accommodation.

Sincerely, Committee Ruth Chin, Cathy Kaplan and Heather Sterling

Contact: email heather@japaneseembroidery.com.au

Heather Sterling 3 Buckley Crescent, Coromandel Valley 5051, South Australia, Australia

Phone: 08 83705405